

<https://www.persoemy.fr/spip.php?article32>



le Grand Vallon de Lascours

- Randos

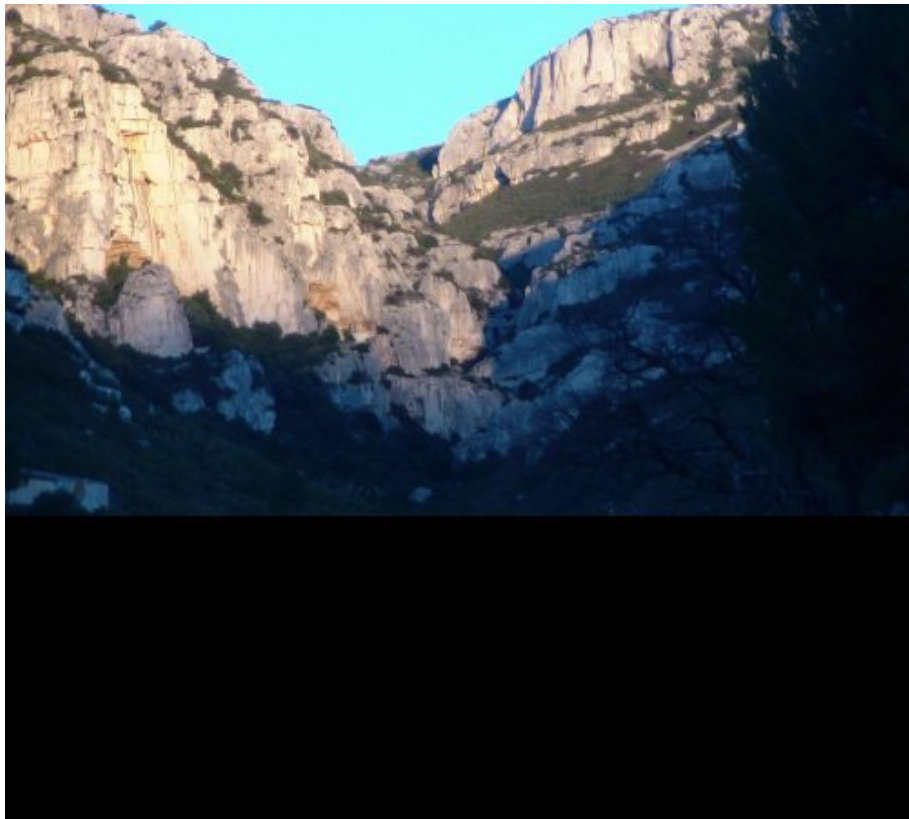
-

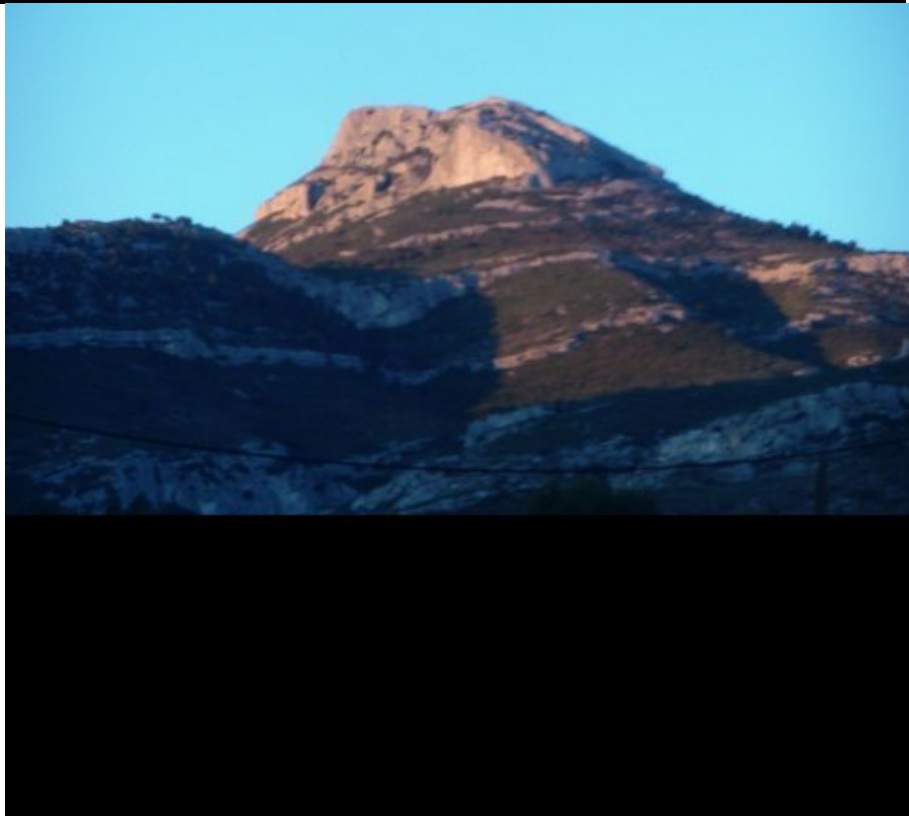


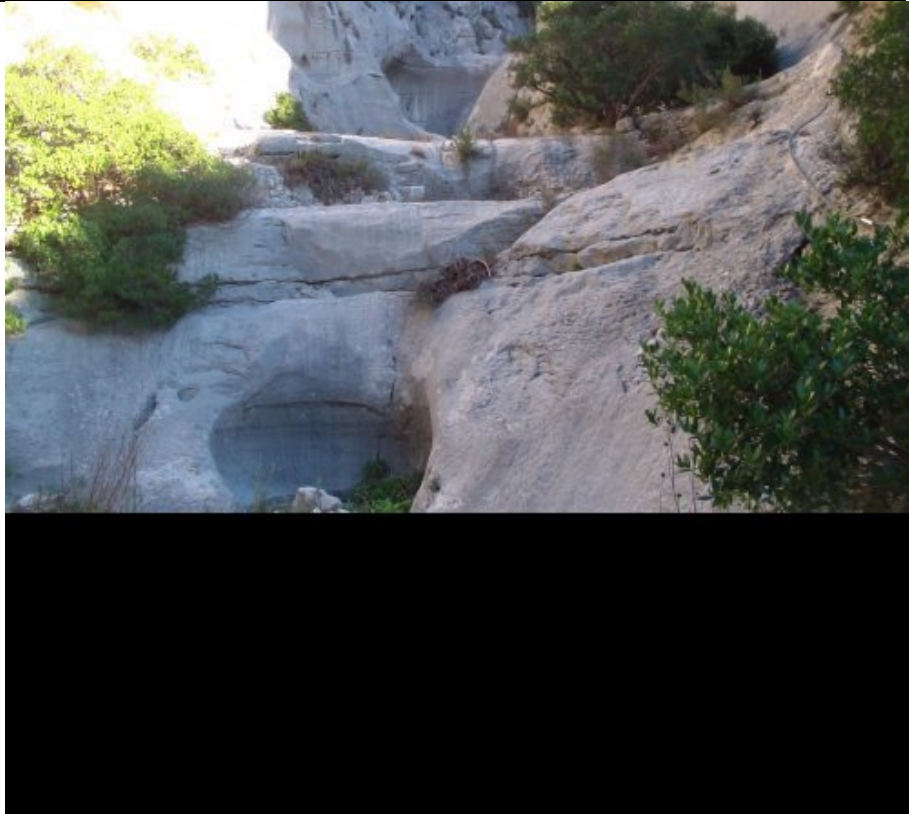
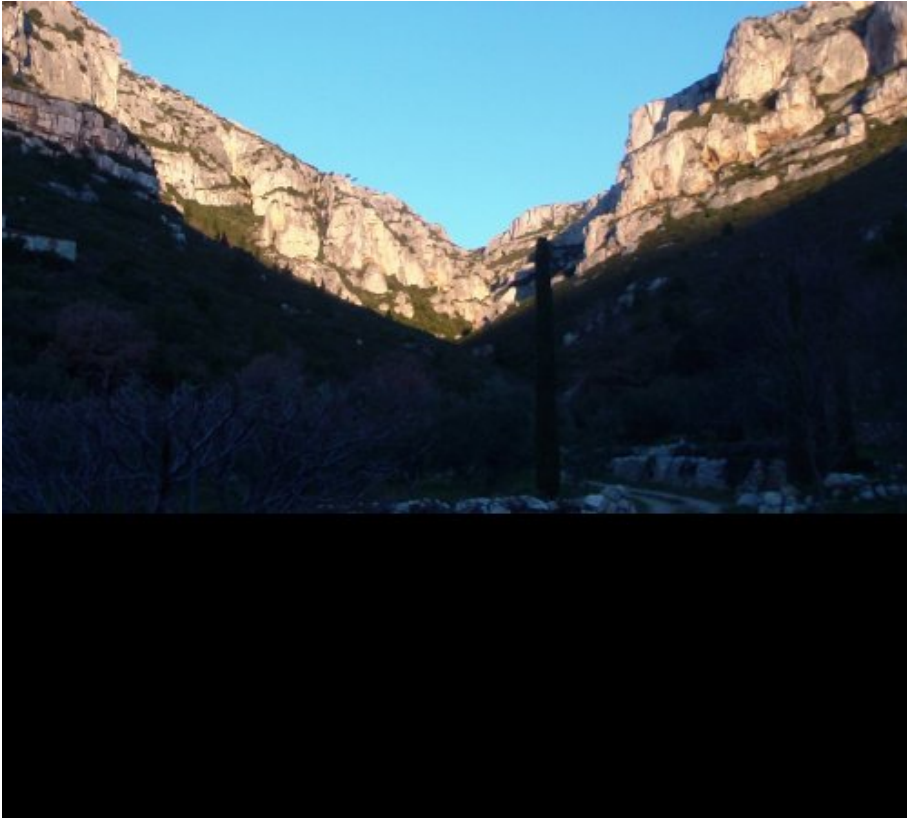
Date de mise en ligne : jeudi 7 février 2013

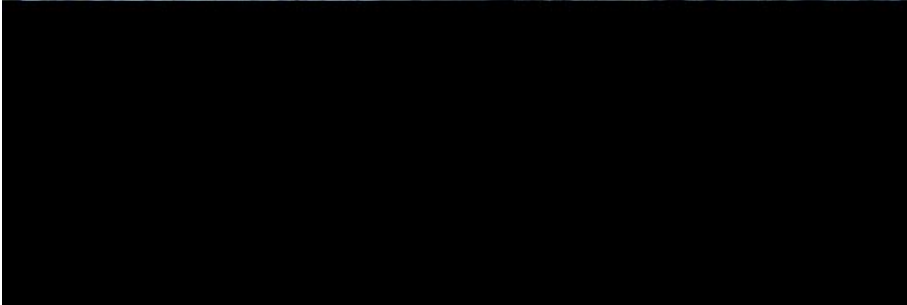
Date de parution : 7 février 2013

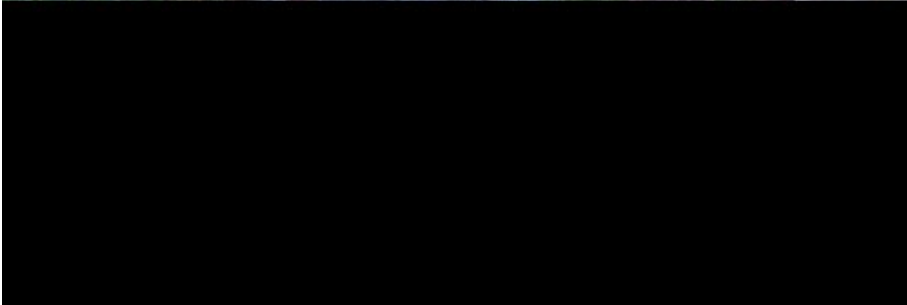
Copyright © persoREMY - Tous droits réservés

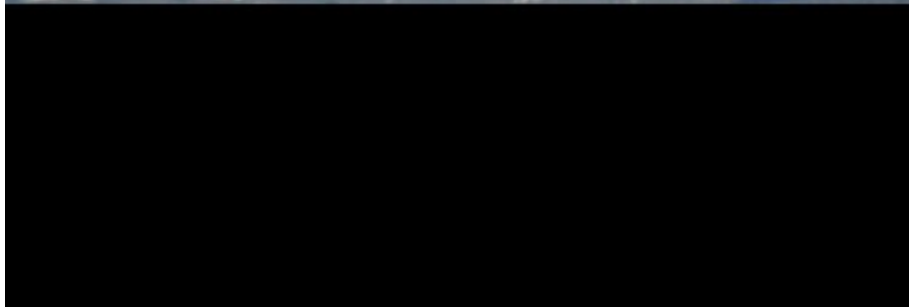
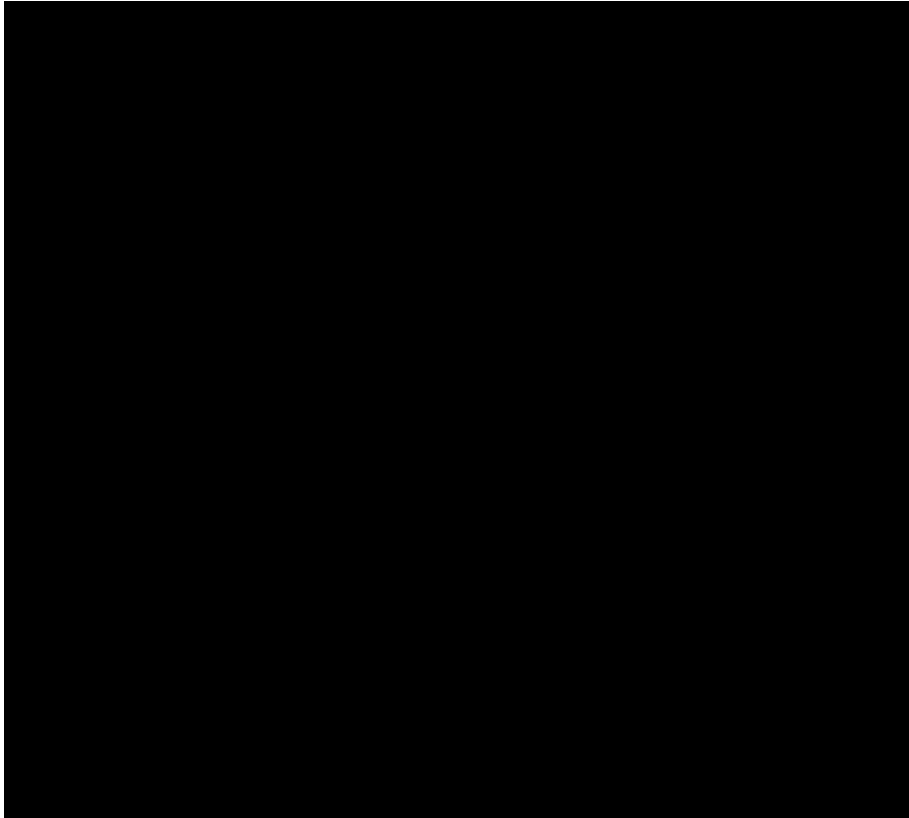






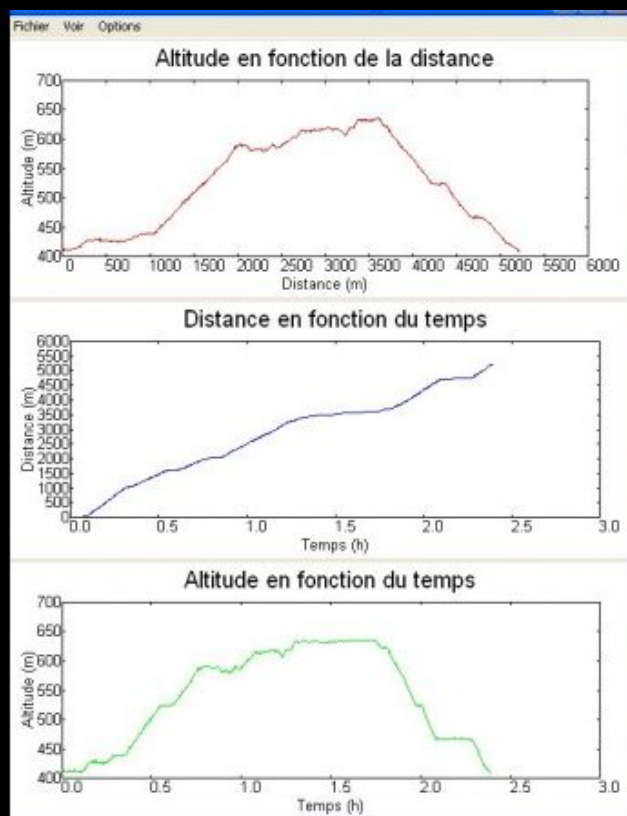


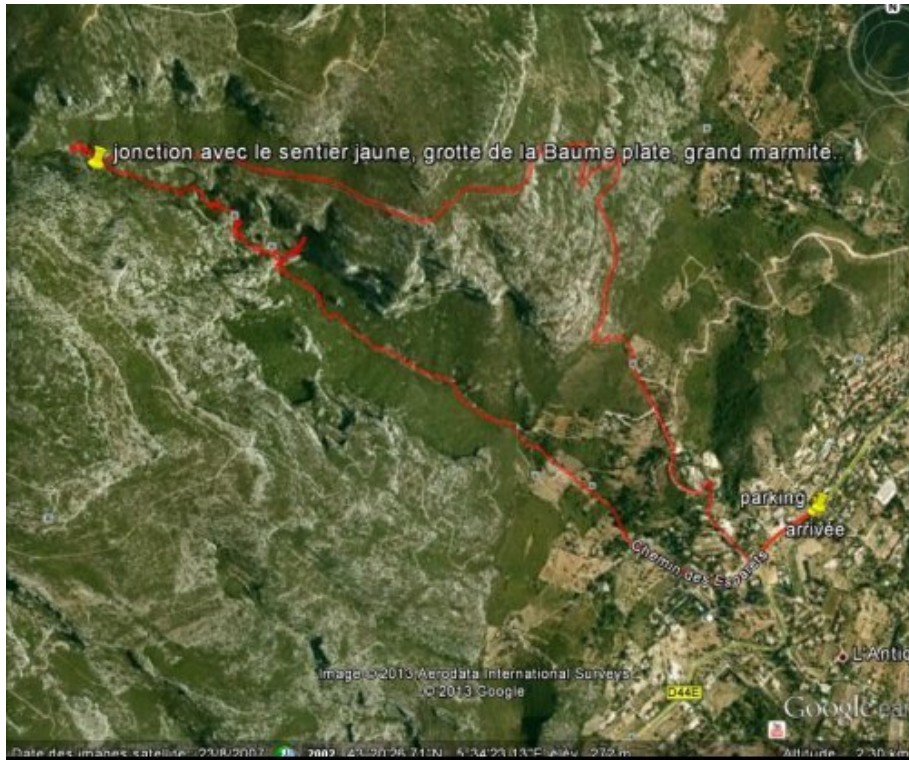




le Grand Vallon de Lascours

	Départ	Arrivée		
Date	05/02/13	05/02/13	Distance (m)	5222,830
Heure	08:32:05	10:55:51	Durée	02:23:46
Altitude (m)	409	408	Vitesse moy (km/h)	2.180
Altitude min (m)	408		Dénivelé + (m)	392
Altitude max (m)	636		Dénivelé - (m)	393
Altitude moy (m)	523			







.cycle-paused:after { display:none; } .texte_infobulle { text-align:left; }